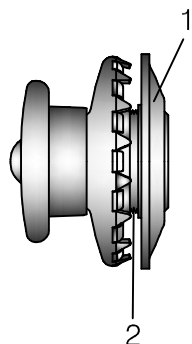


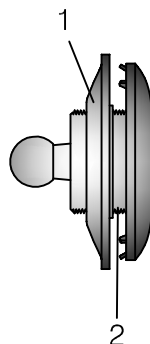
## Mounting instruction for LOXX® fabric-to-fabric connection



LOXX® upper part  
with washer



LOXX® lower part for fabric  
with washer



Unscrew the washer (1) of the LOXX® upper part and the LOXX® lower part for fabric with a counterclockwise rotation by using one of the mounting tools.

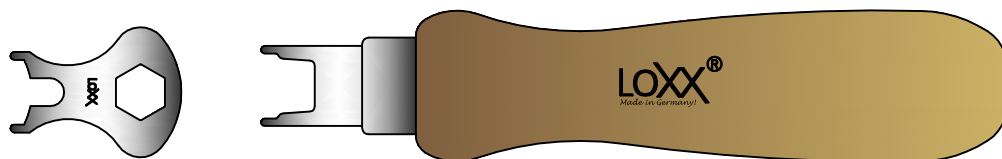
Stick the thread (2) of the LOXX® upper part / lower part for fabric through the pre-cut 10mm (3/8") hole in the fabric.

Following, use one of the mounting tools to tightly screw the washer (1) onto the respective thread (2).

To close, click the LOXX® upper part onto the LOXX® lower part gently pressing down.

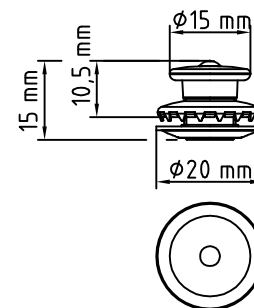
To open, simply lift the cap of the LOXX® upper part, and the ball head will be released.

Mounting tools

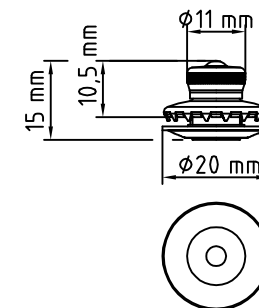


## Technical specifications\*

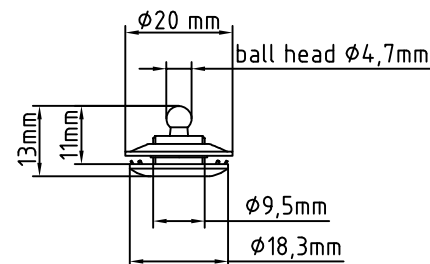
LOXX® upper part  
with washer



LOXX® upper part small head  
with washer



LOXX® upper part for fabric  
with washer



Washers for LOXX® upper part  
and lower part for fabric

standard washer  
< 3 mm (1/8") clamping area

long washer  
< 4 mm (5/32") clamping area

\*We do not guarantee the accuracy of the technical specifications.  
Please check the measurements before mounting.